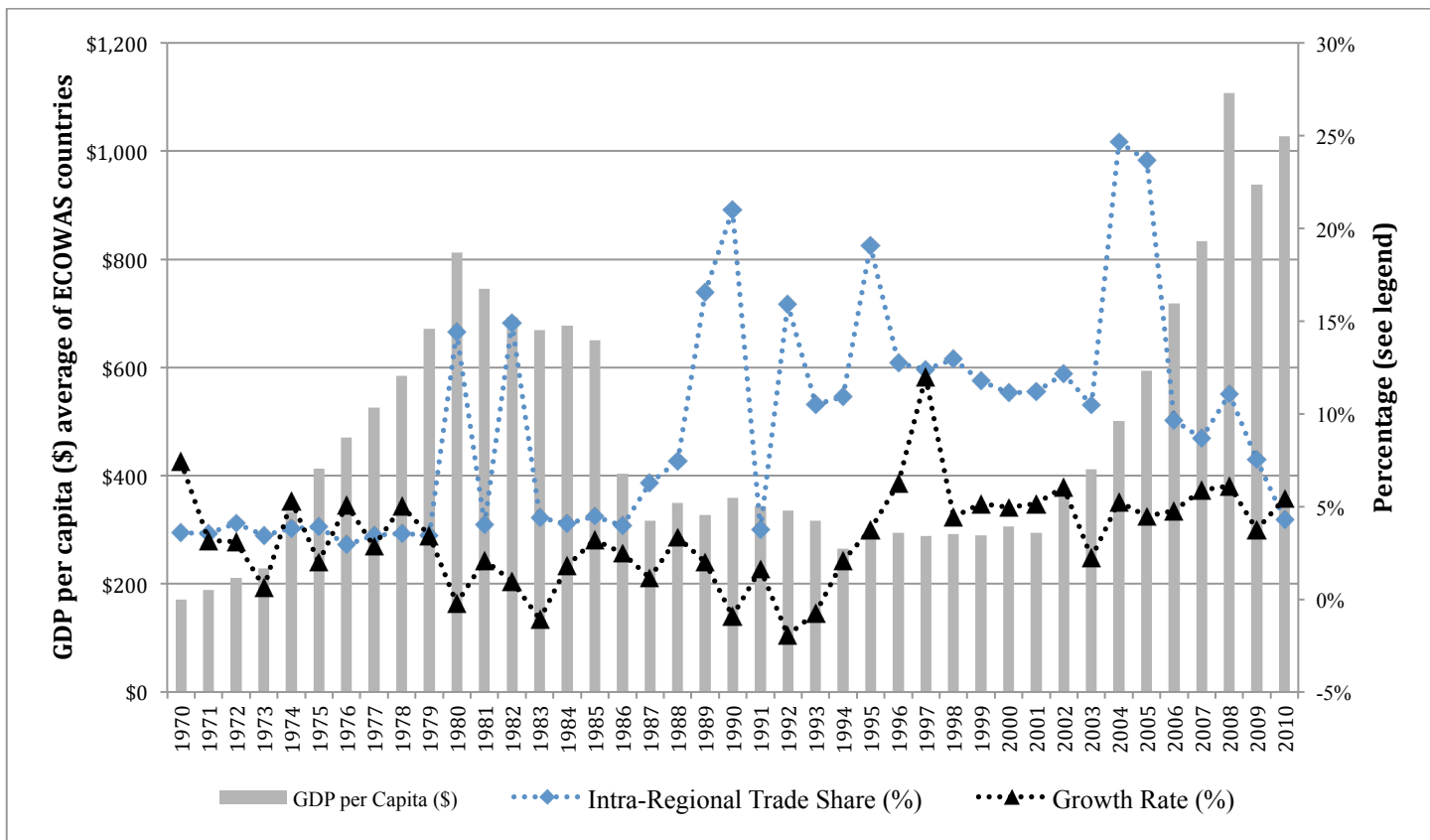
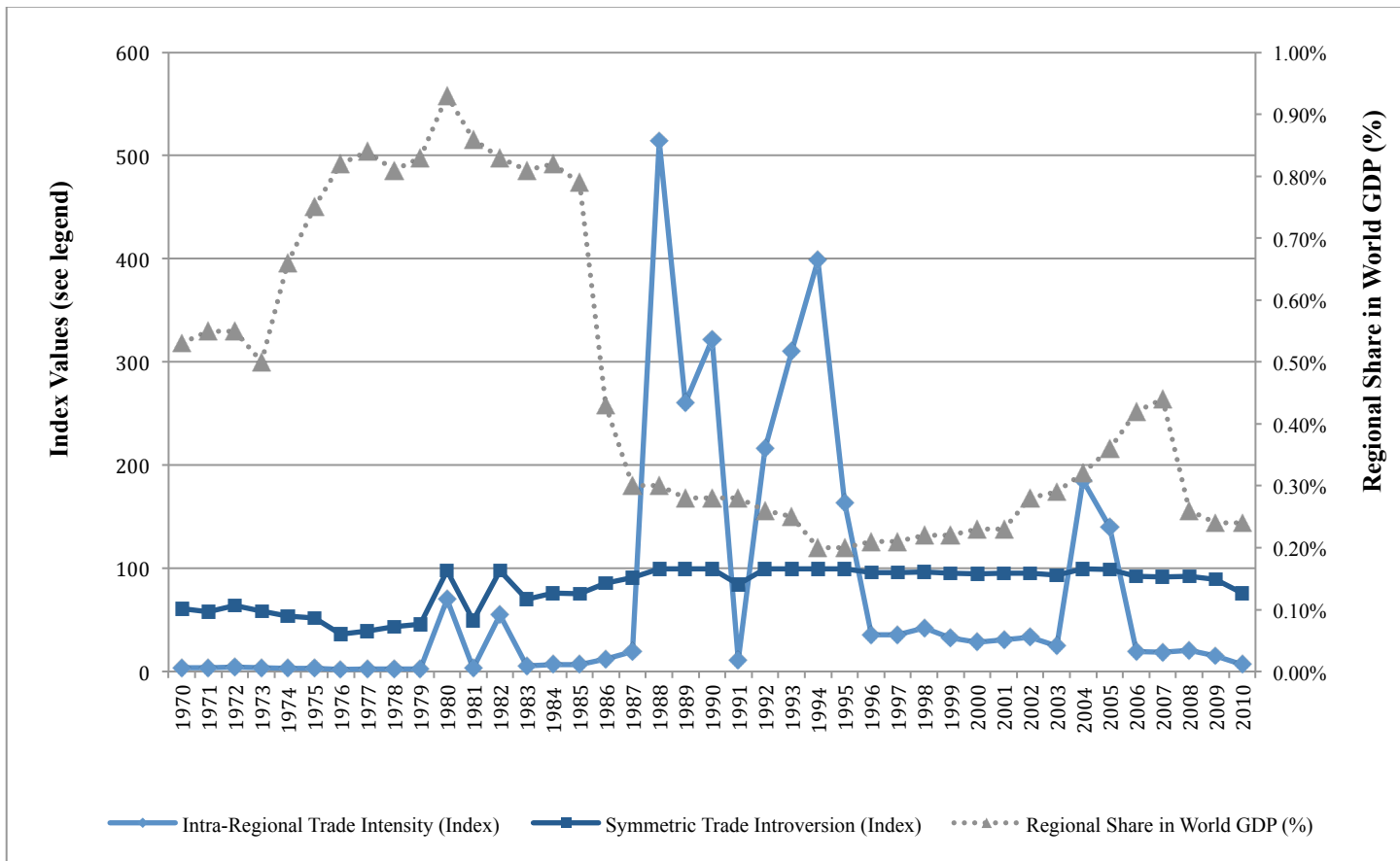


**Figure 1: Regional Integration in ECOWAS and Economic Growth\***



\*See Table 1 for data sources.

**Figure 2: Regional Integration in ECOWAS and Share in World GDP\***



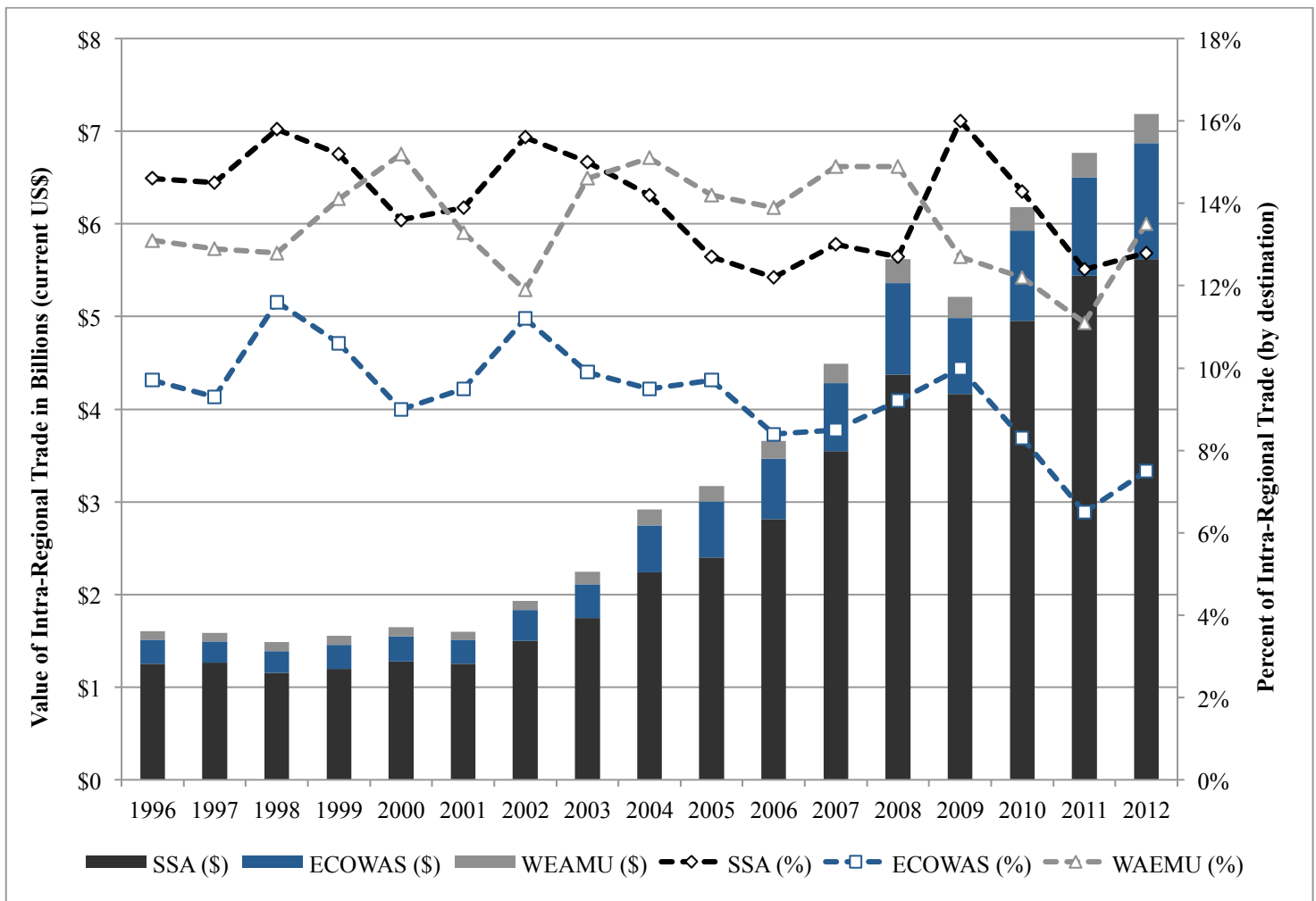
\*See Table 1 for data sources.

**Table 1: Data Table for Figures One and Two\***

	Intra-Regional Trade Intensity Index	Symmetric Trade Introversion Index	Intra-Regional Trade Share	GDP per Capita (avg.)	GDP Share in World GDP	Growth rate (avg.)
1970	3.87	0.61	3.57	170.91	0.53	7.42%
1971	3.52	0.58	3.56	188.51	0.55	3.18%
1972	4.22	0.64	4.09	211.32	0.55	3.09%
1973	3.61	0.59	3.46	229.09	0.50	0.65%
1974	3.13	0.54	3.82	333.32	0.66	5.30%
1975	2.95	0.52	3.88	413.01	0.75	2.00%
1976	2.04	0.36	2.93	470.26	0.82	5.09%
1977	2.18	0.39	3.45	525.88	0.84	2.87%
1978	2.41	0.44	3.56	584.36	0.81	5.02%
1979	2.53	0.46	3.44	672.04	0.83	3.44%
1980	69.90	0.98	14.41	812.13	0.93	-0.23%
1981	2.79	0.50	4.02	745.40	0.86	2.12%
1982	55.00	0.97	14.88	692.41	0.83	0.99%
1983	5.20	0.70	4.42	668.67	0.81	-1.09%
1984	6.80	0.76	4.08	676.80	0.82	1.81%
1985	6.48	0.75	4.48	650.63	0.79	3.22%
1986	12.21	0.86	3.97	404.07	0.43	2.50%
1987	19.28	0.91	6.25	316.75	0.30	1.15%
1988	514.25	1.00	7.47	349.64	0.30	3.35%
1989	260.42	0.99	16.54	327.80	0.28	2.02%
1990	321.80	1.00	20.99	359.39	0.28	-0.91%
1991	10.85	0.84	3.74	343.28	0.28	1.62%
1992	215.92	0.99	15.91	335.76	0.26	-1.94%
1993	310.56	0.99	10.51	316.80	0.25	-0.75%
1994	398.16	1.00	10.92	265.52	0.20	2.07%
1995	163.44	0.99	19.06	283.14	0.20	3.77%
1996	35.43	0.96	12.74	293.83	0.21	6.24%
1997	35.55	0.96	12.40	288.01	0.21	11.99%
1998	42.33	0.96	12.95	292.03	0.22	4.44%
1999	32.77	0.95	11.78	289.72	0.22	5.17%
2000	28.12	0.95	11.12	305.58	0.23	4.97%
2001	31.04	0.95	11.19	294.73	0.23	5.15%
2002	33.43	0.95	12.15	359.85	0.28	6.04%
2003	24.97	0.94	10.48	412.35	0.29	2.26%
2004	185.35	0.99	24.65	500.80	0.32	5.28%
2005	139.56	0.99	23.66	593.98	0.36	4.48%
2006	19.59	0.92	9.66	718.35	0.42	4.78%
2007	18.85	0.91	8.69	833.34	0.44	5.88%
2008	20.56	0.93	11.05	1107.50	0.26	6.13%
2009	15.33	0.89	7.52	937.99	0.24	3.77%
2010	6.66	0.76	4.32	1027.23	0.24	5.43%

\*Notes on Data Sources: All data is for the ECOWAS block or averages of ECOWAS member countries. Data Sources for intra-regional trade intensity index, symmetric trade introversion index, intra-regional trade share, regional GDP in world GDP: United Nations University, Institute on Comparative Regional Integration Studies (UN CRIS) Regional Integration Knowledge System (RIKS). Data sources for average GDP per capita and GDP growth rate: World Bank Development Indicators. (Updated July 2015, no new data made available)

Figure 3: Comparing Value of Intra-Regional Trade in ECOWAS, WEAMU, and SSA\*

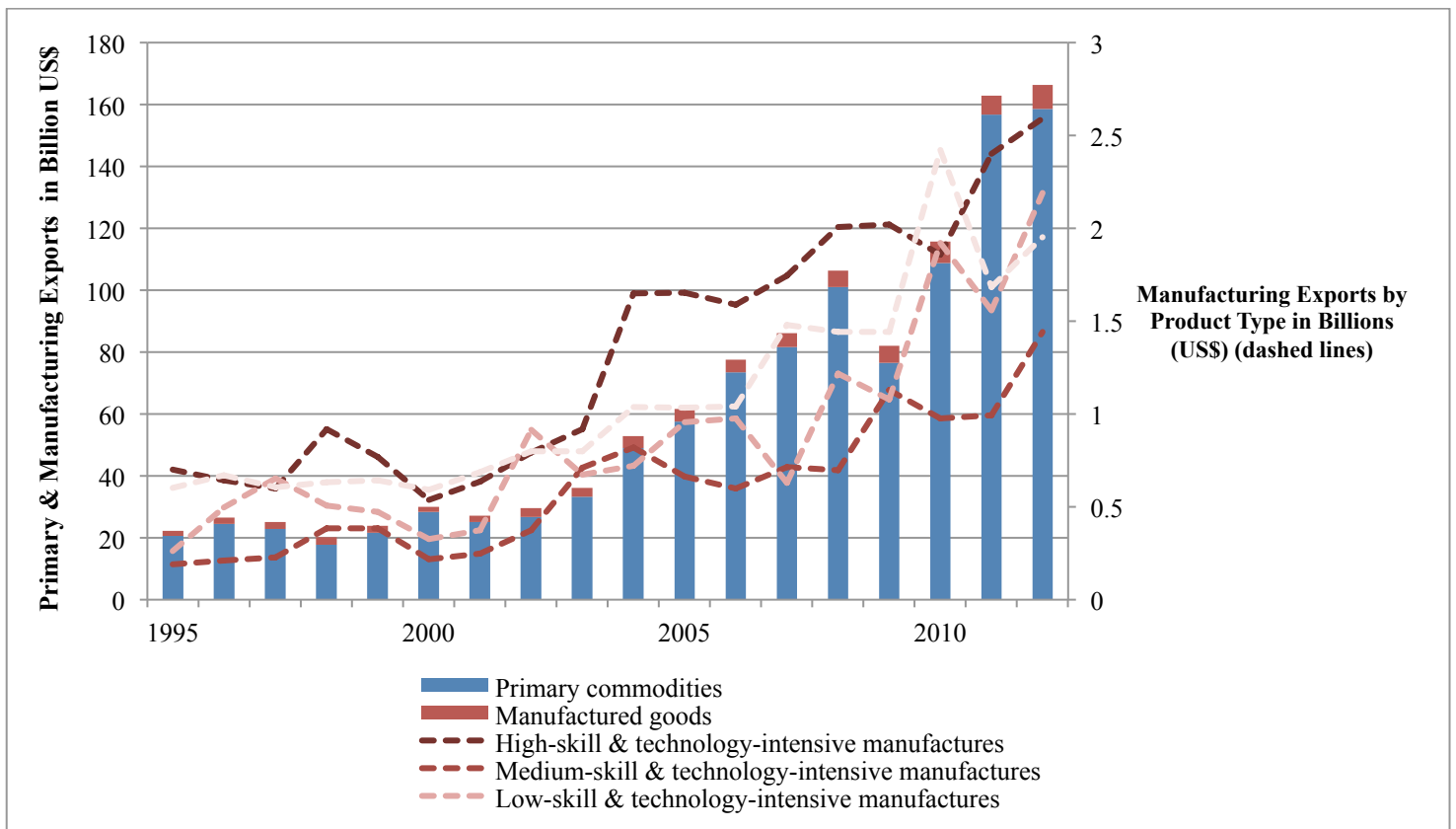


	1996	'97	'98	'99	'00	'01	'02	'03	'04	'05	'06	'07	'08	'09	'10	'11	'12	2013
ECOWAS (\$)	2577	2328	2354	2543	2710	2605	3330	3629	5078	6010	6566	7338	9872	8203	9782	10635	12529	13479
ECOWAS (%)	9.7	9.3	11.6	10.6	9.0	9.5	11.2	9.9	9.5	9.7	8.4	8.5	9.2	10.0	8.3	6.5	7.5	9.3
WAEMU (\$)	940	908	950	1023	975	887	993	1363	1690	1716	1894	2113	2647	2295	2533	2645	3124	3519
WAEMU (%)	13.1	12.9	12.8	14.1	15.2	13.3	11.9	14.6	15.1	14.2	13.9	14.9	14.9	12.7	12.2	11.1	13.5	14.7
SSA (\$)	12518	12620	11550	11998	12779	12496	14992	17468	22399	24012	28122	35462	43710	41634	49522	54382	62230	70202
SSA (%)	14.6	14.5	15.8	15.2	13.6	13.9	15.6	15.0	14.2	12.7	12.2	13.0	12.7	16.0	14.3	12.4	14.2	16.5

\*All Data Sources: UNCTADstat, variable "Intra-trade of regional and trade groups by product, annual, 1995-2012"

Cells shaded in yellow are either corrected numbers from UNCTAD or new data (both of which are not reflected in the above graph).

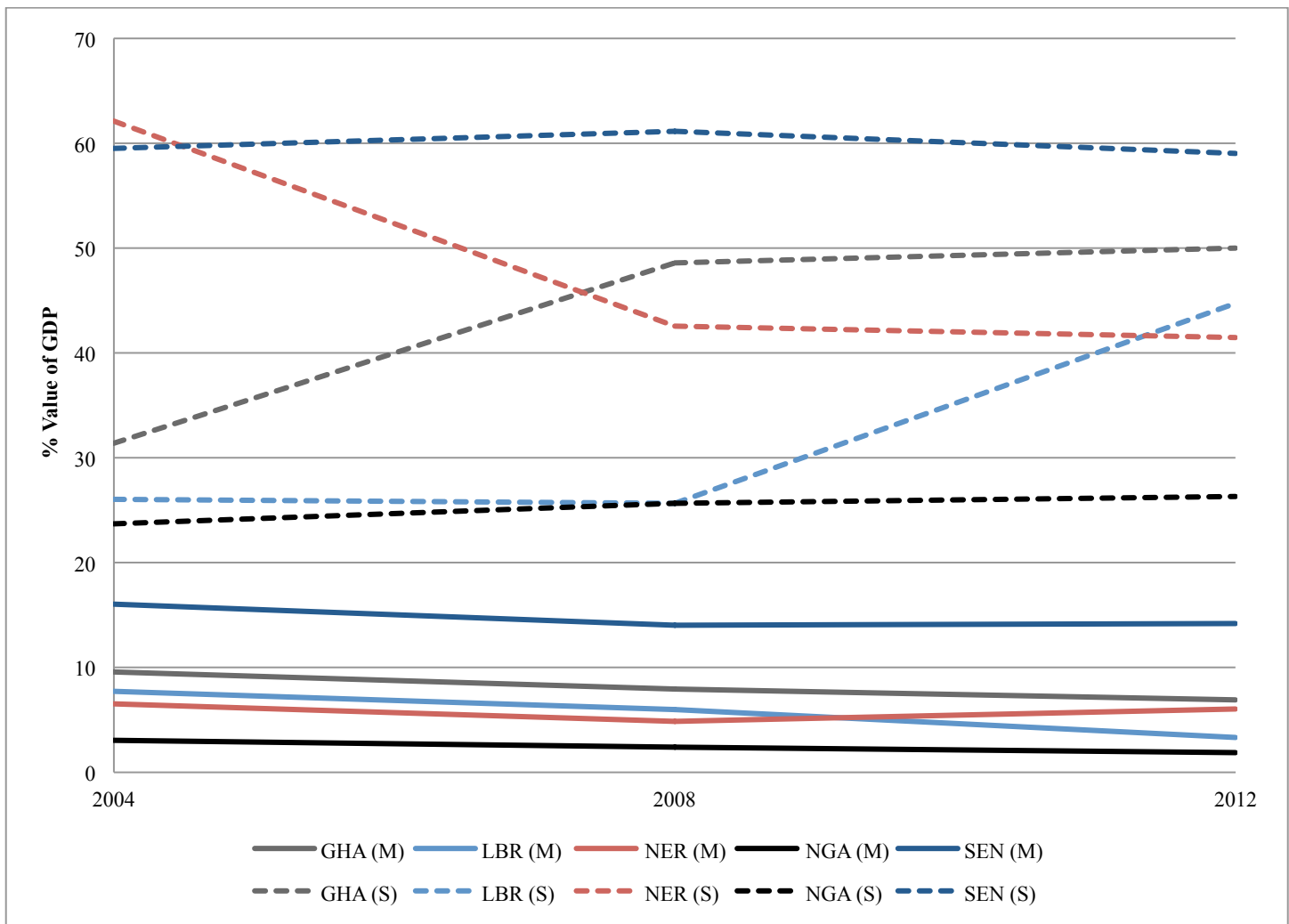
Figure 4: ECOWAS Exports: Primary Commodities vs. Manufacturers\*



	1995	1996	1997	1998	1999	2000	2001	2002	2003	2004	2005	2006	2007	2008	2009	2010	2011	2012
Primary commodities	2051	2443	2292	1777	2169	2832	2517	2675	3322	4891	5752	7344	8155	1011	7655	1087	1567	1586
Manufactured goods	8230	9754	9821	1394	7202	6335	9776	4388	1615	4092	6431	0542	2534	2719	5121	9560	4009	1724
Labour-intensive and resource-intensive	.19	.34	.04	.5	.77	.83	.76	.81	.54	.11	.1	.66	4.1	.65	1.9	2	5.2	
Low-skill and technology-intensive	1699	1989	2073	2410	2245	1653	1934	2813	2945	4035	4154	4145	4491	5173	5412	7001	6139	7731
Medium-skill and technology-intensive	907.	030.	306.	727.	889.	275.	610.	858.	863.	678.	361.	197.	983.	433.	639.	683.	665.	083.
High-skill and technology-intensive	424	48	658	623	356	882	134	04	416	048	612	467	617	509	907	419	621	033
Labour-intensive and resource-intensive	6025	6692	6041	6313	6423	5902	6881	7994	7979	1038	1035	1039	1480	1442	1442	2422	1682	1952
Low-skill and technology-intensive	33.5	54.5	73.4	02.7	49.7	00.1	21.8	53.5	71.0	703.	034.	656.	010.	379.	833.	542.	272.	248.
Medium-skill and technology-intensive	36	35	35	77	48	52	35	81	51	294	539	456	364	268	769	928	751	954
High-skill and technology-intensive	2608	4978	6530	5054	4738	3250	3747	9151	6737	7228	9547	9770	6282	1219	1078	1923	1556	2191
Labour-intensive and resource-intensive	55.0	03.7	16.0	39.7	16.5	80.7	02.0	22.9	62.9	19.9	15.9	94.5	00.0	259.	732.	006.	467.	141.
Low-skill and technology-intensive	43	83	63	81	35	39	56	35	07	09	57	35	21	749	513	942	92	803
Medium-skill and technology-intensive	1895	2093	2289	3860	3853	2160	2481	3754	7093	8208	6644	5990	7129	6981	1128	9770	9934	1440
High-skill and technology-intensive	16.7	47.1	59.9	21.7	79.1	35.4	58.4	82.6	60.8	33.5	93.5	96.7	97.4	48.1	277.	19.2	05.9	935.
Labour-intensive and resource-intensive	01	22	14	76	68	66	68	29	34	86	9	66	92	9	645	19	61	929
Low-skill and technology-intensive	7000	6433	5999	9169	7692	5365	6350	7938	9169	1651	1652	1589	1743	2007	2019	1857	2401	2593
Medium-skill and technology-intensive	92.3	29.8	47.1	02.8	07.3	04.7	16.0	45.2	71.2	227.	587.	309.	838.	735.	883.	921.	978.	795.
High-skill and technology-intensive	96	66	66	65	82	05	58	97		496	355	976	967	029	705	239	19	604

\*Data Sources: UNCTADstat (see legend for name of variables chosen) (numbers in the table are in thousands in order to fit inside page margins)

Figure 5: Shifting Economic Patterns in 5 ECOWAS Countries: Services (S) vs. Manufacturing (M)\*



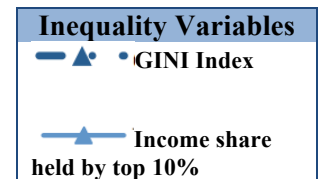
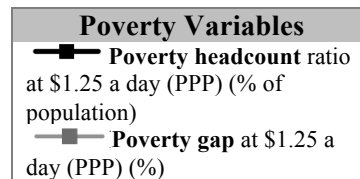
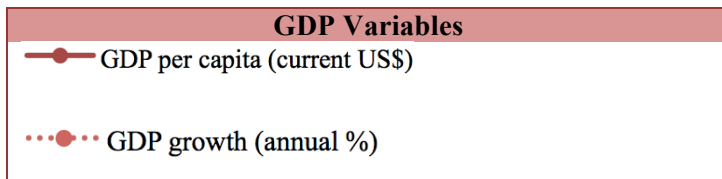
	Manufacturing, value added					Services, etc. value added						
	Current US\$ (millions)			%GDP		Current US\$ (millions)			% GDP			
	2004	2008	2012	2004	2008	2012	2004	2008	2012	2004	2008	2012
BEN	317.3	475.9		7.83	7.17		2,204.3	3,659.3		54.42	55.16	
BFA	638.4	639.5		14.41	8.32		1,963,295,143	3,396.5		44.30	44.20	
CPV	59.2	86.7		5.79	4.85		762,999,798	1,315		74.62	73.49	
CIV	2,880	4,219.5		18.61	18.02		8,320.6	11,450.5		53.75	48.90	
GMB	32.4	55.9		5.60	5.79		344.9	592.2		59.59	61.31	
GHA	776.4	2,152.2	2,606.1	9.57	7.94	6.89	2,547	13,172.5	18,912.3	31.39	48.61	49.99
GIN	207.7	282		6.09	6.83		1,438.9	1,350.4		42.17	32.70	
GNB												
LBR	36.1	51.1	57.6	7.73	6.01	3.32	121.5	218	775.9	26.03	25.64	44.75
MLI	150.7			3.37			1,777.5	3,165.9		39.76	39.83	
NER	199	262.5	409.7	6.52	4.86	6.05	1,896.4	2,299.9	2,807.9	62.12	42.56	41.46
NGA	2,628.7	4,939.6	4,856	3.06	2.41	1.88	20,350.3	52,605.3	68,068.5	23.70	25.67	26.33
SEN	1,126.4	1,647.7	1,743	16.02	14.03	14.17	4,186.6	7,180.8	7,262.3	59.54	61.14	59.04
SLE	37.6	61		2.78	2.56		482.1	843.4		35.58	35.37	
TGO	158.8	268		8.20	8.49		903.1	1,296.9		46.62	41.05	
Avg <sup>1</sup>	953.32	1810.6	1934.5	8.58	7.05	6.46	5820.36	15095.3	19565.4	40.56	40.72	44.31

\*Notes on Data Sources: Data Sources for all variables are from the World Bank's Economy and Growth Indicators. The graph's variables on % of GDP for "manufacturing" and % of GDP in "services, etc." are taken from a possibility of 4 trade categories that also include agriculture and industry (which includes "manufacturing" and mining, construction, electricity, water, and gas).

Country Codes: GHA: Ghana, LBR: Liberia, NER: Niger, NGA: Nigeria and SEN: Senegal

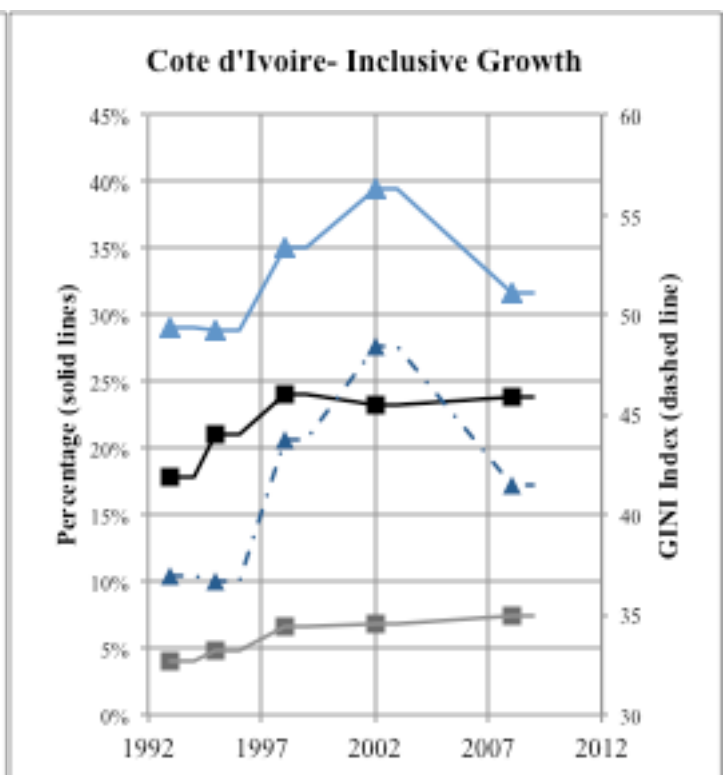
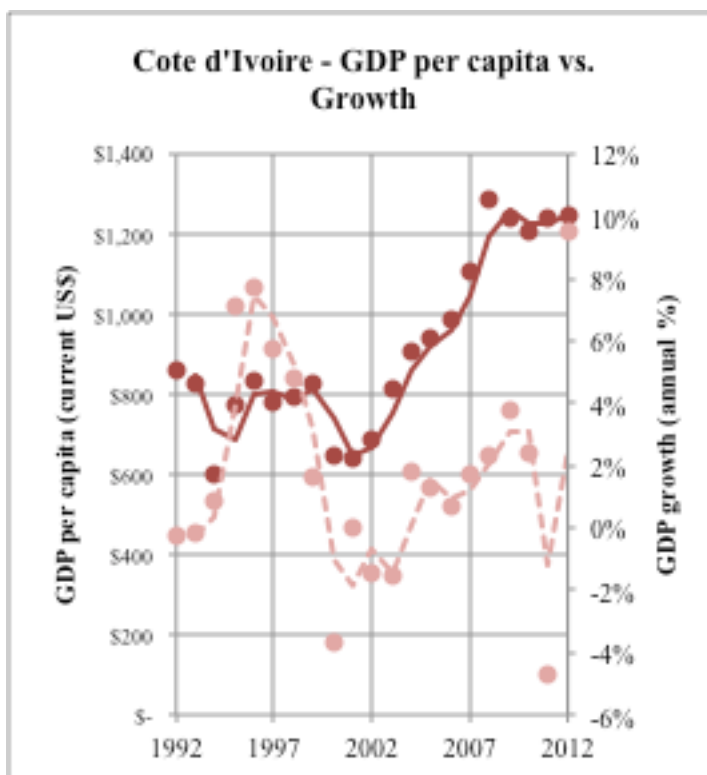
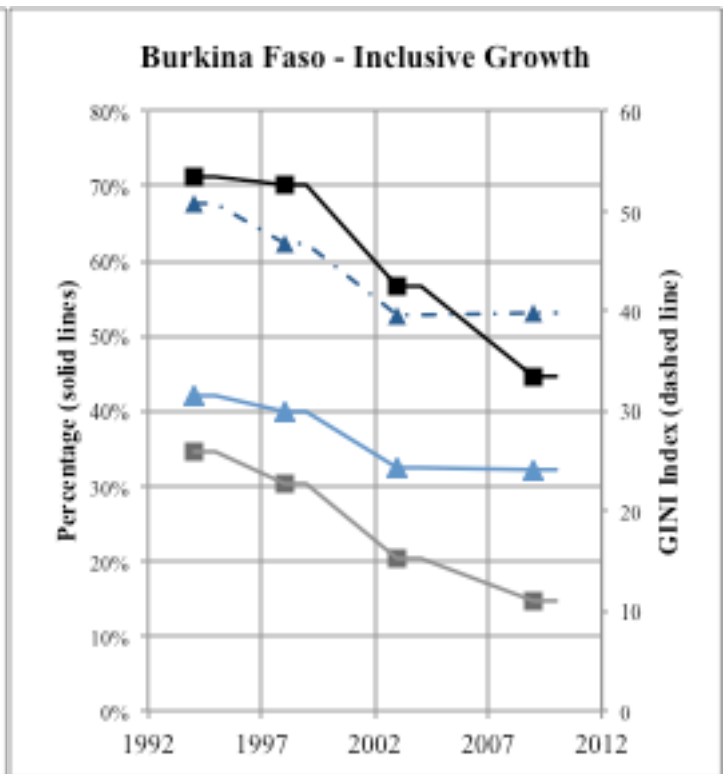
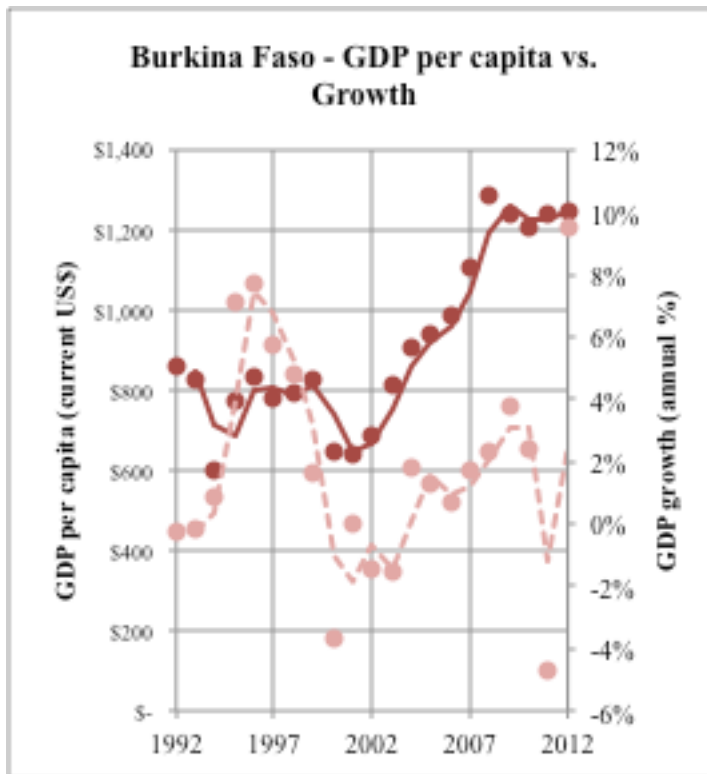
<sup>1</sup> "Avg." represents average scores/data from the five countries with full data availability among the table's variables and years of analysis, which includes Ghana, Liberia, Niger, Nigeria, and Senegal.

Figure 6: Eight Case Studies on ECOWAS Growth Profiles (next four pages)

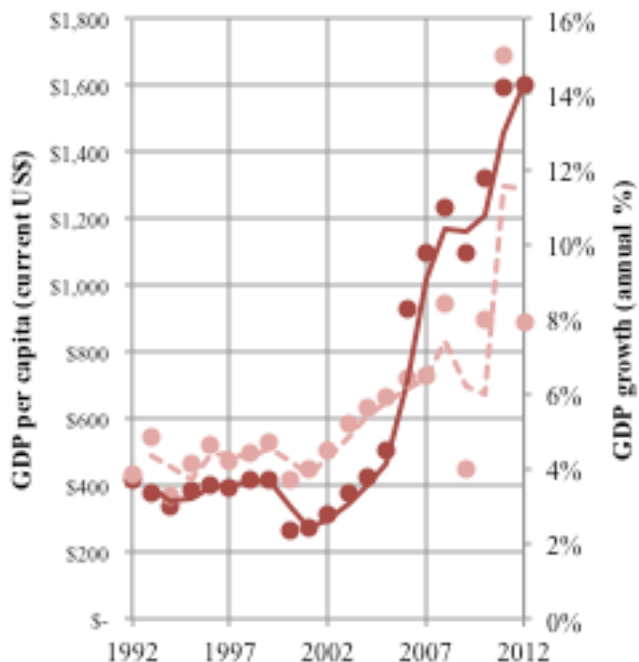


\* Solid lines correspond to left y-axis, dashed lines to right y-axis.

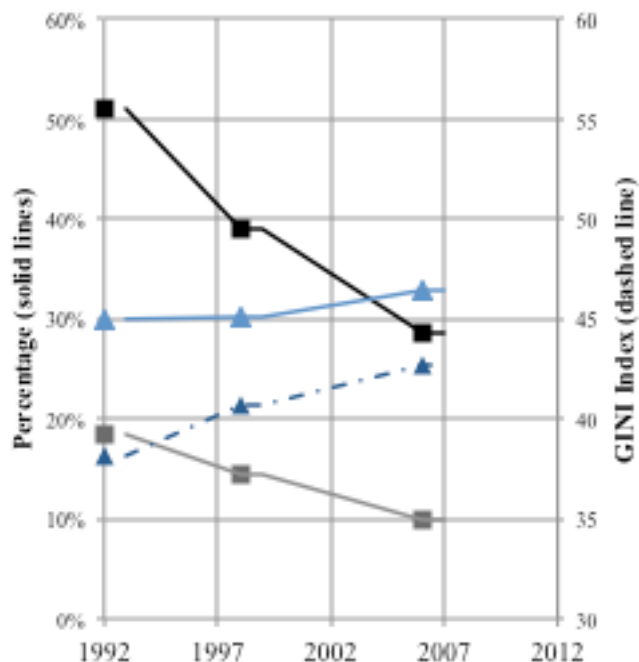
\* All data sources: World Bank Development Indicators, poverty and Inequality Database.



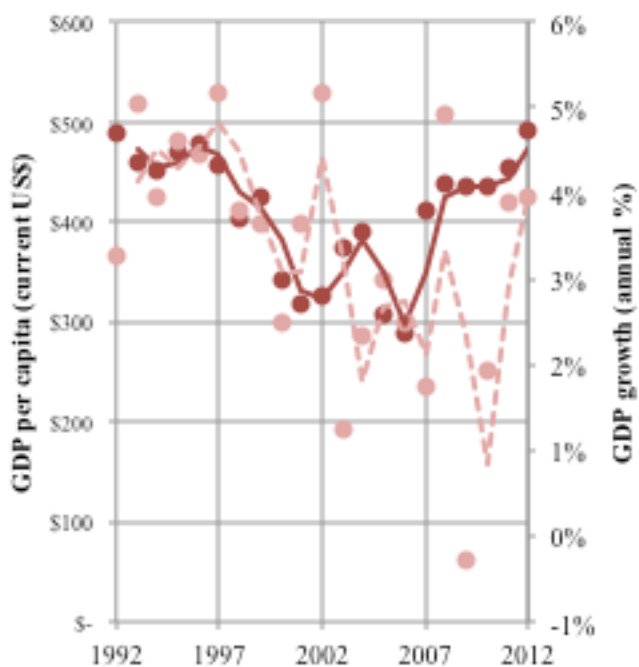
**Ghana- GDP per capita vs. Growth**



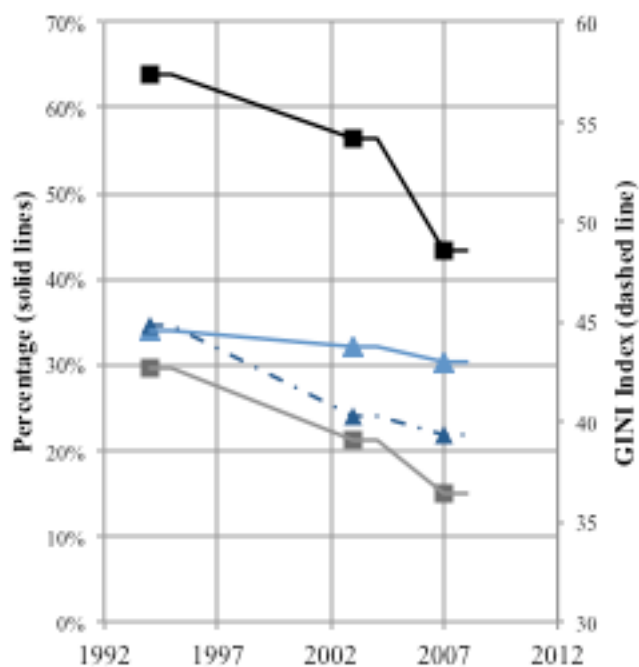
**Ghana - Inclusive Growth**



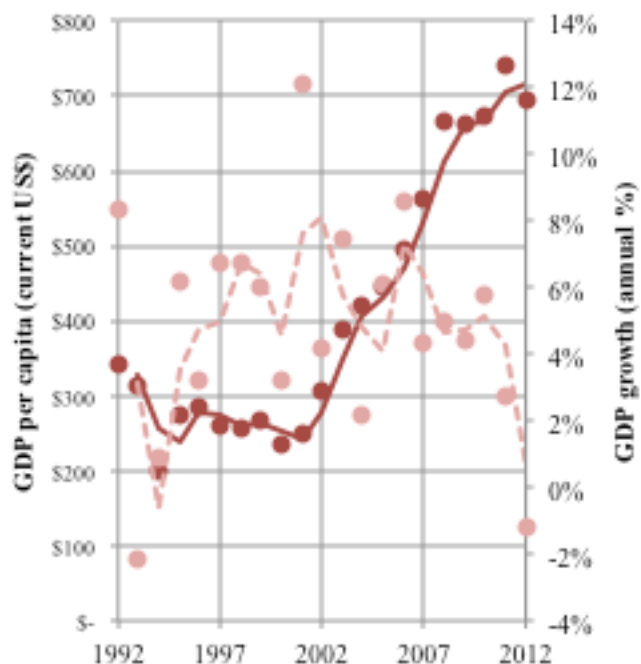
**Guinea- GDP per capita vs. Growth**



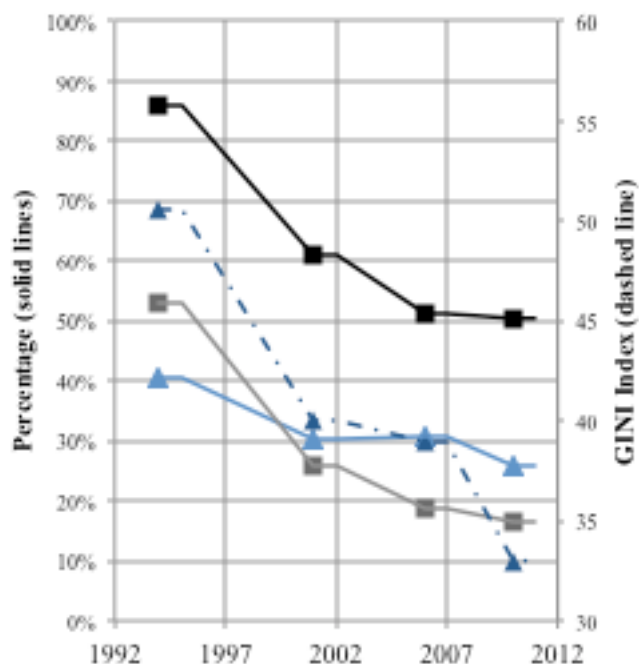
**Guinea - Inclusive Growth**



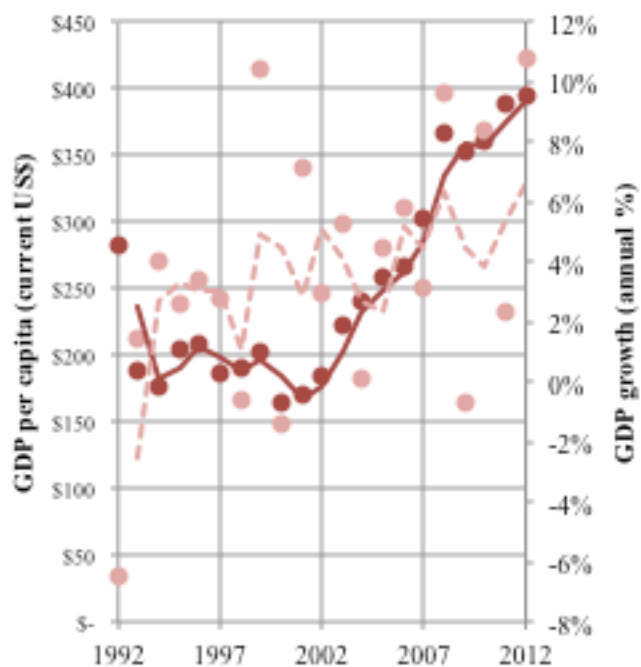
**Mali - GDP per capita vs. Growth**



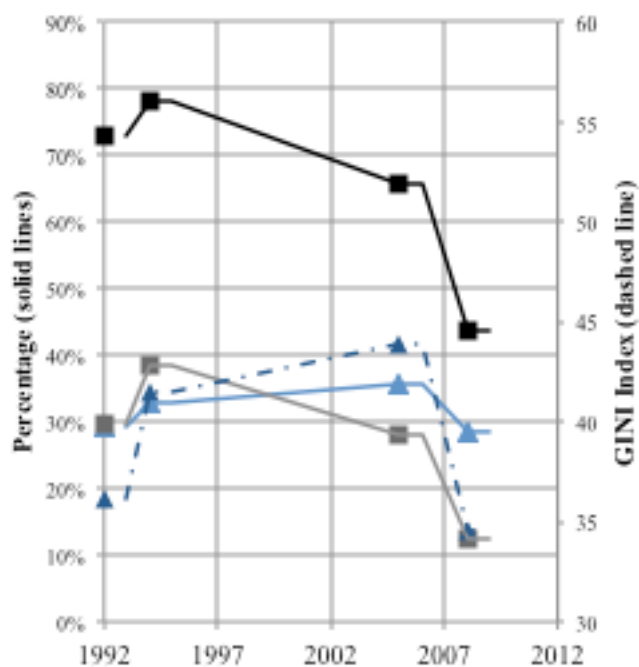
**Mali - Inclusive Growth**



**Niger - GDP per capita vs. Growth**

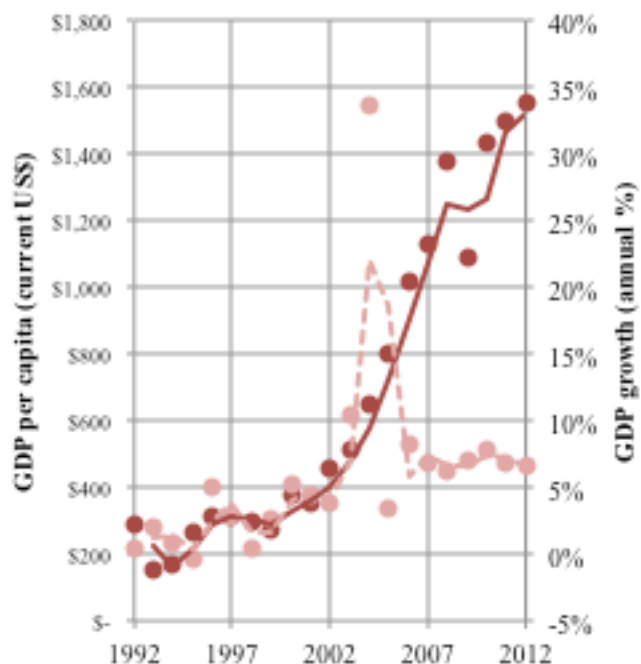


**Niger - Inclusive Growth**

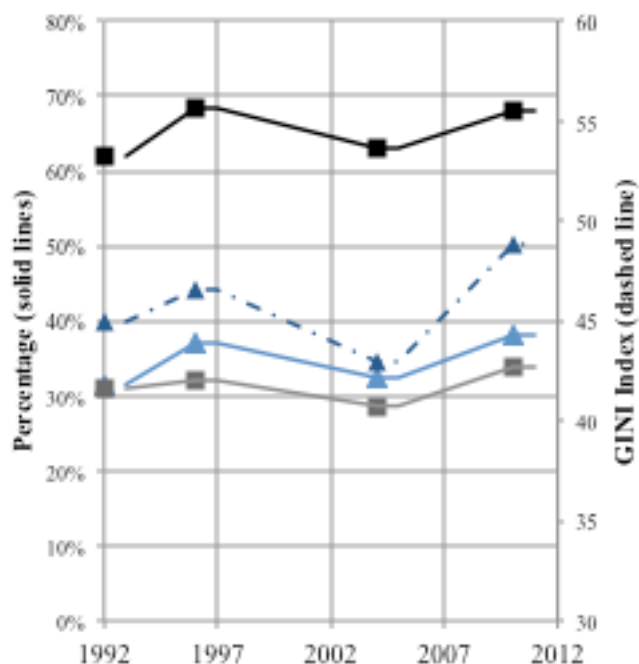




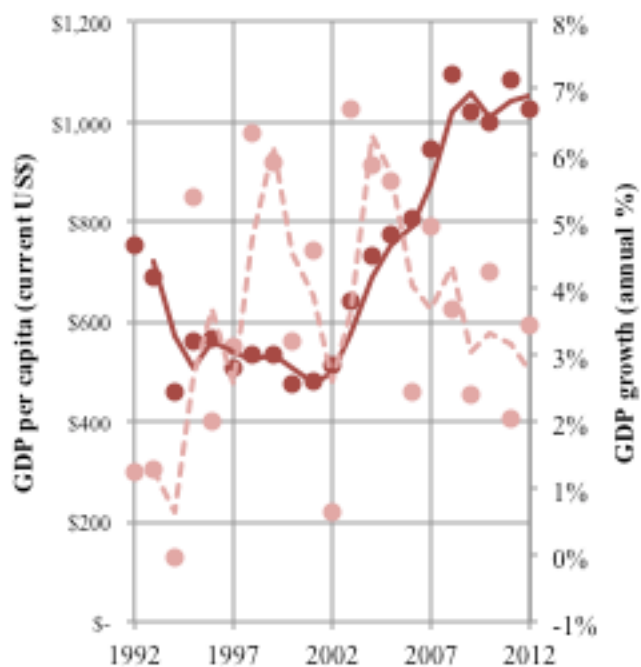
**Nigeria - GDP per capita vs. Growth**



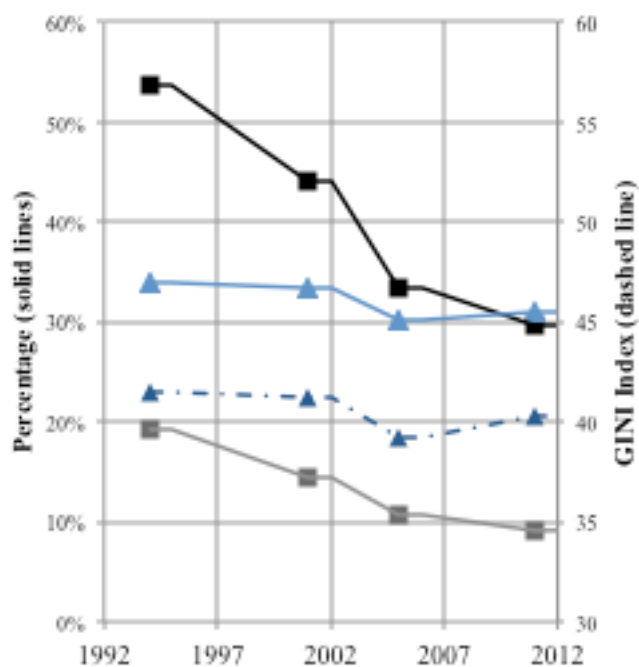
**Nigeria - Inclusive Growth**



**Senegal - GDP per capita vs. Growth**



**Senegal - Inclusive Growth**



**Table 2: Inclusive Growth? (GINI, Poverty Headcount, Wealth Owned by Top 10% & Poverty Gap 1992-2011)\***

| 1992 | 1993 | 1994 | 1995 | 1996 | 1997 | 1998 | 1999 | 2000 | 2001 | 2002 | 2003 | 2004 | 2005 | 2006 | 2007 | 2008 | 2009 | 2010 | 2011 | 2012 |

**Burkina Faso**

1			50.71				46.85					39.6							39.79			
2			42%				40%					32%							32%			
3			35%				30%					20%							15%			
4			71%				70%					57%							45%			
5	0.23%	3.46%	1.32%	5.72%	11.01%	6.32%	7.40%	7.31%	1.85%	6.59%	5.14%	7.80%	4.48%	8.66%	6.77%	3.61%	5.80%	2.97%	7.94%	4.21%	10.03%	
6	\$241	\$244	\$193	\$236	\$249	\$230	\$267	\$256	\$225	\$235	\$261	\$332	\$371	\$407	\$423	\$475	\$570	\$553	\$593	\$650	\$634	

**Cote d'Ivoire**

1		36.91		36.68			43.75				48.39							41.5				
2		29%		29%			35%				40%							32%				
3		4%		5%			7%				7%							8%				
4		18%		21%			24%				23%							24%				
5	0.24%	0.19%	0.81%	7.13%	7.73%	5.72%	4.75%	1.59%	3.70%	-0.02%	1.43%	-1.56%	1.79%	1.26%	0.68%	1.71%	2.33%	3.75%	2.39%	-4.73%	9.50%	
6	\$861	\$826	\$602	\$774	\$830	\$779	\$795	\$828	\$646	\$642	\$689	\$812	\$903	\$941	\$983	\$1,103	\$1,282	\$1,239	\$1,208	\$1,242	\$1,244	

**Ghana**

1	38.13						40.75											42.76				
2	30%						30%											33%				
3	18%						14%											10%				
4	51%						39%											29%				
5	3.88%	4.85%	3.30%	4.11%	4.60%	4.20%	4.40%	4.70%	3.70%	4.00%	4.50%	5.20%	5.60%	5.90%	6.40%	6.46%	8.43%	3.99%	8.01%	15.01%	7.91%	
6	\$415	\$375	\$333	\$386	\$404	\$392	\$420	\$416	\$265	\$275	\$312	\$376	\$426	\$502	\$930	\$1,099	\$1,234	\$1,097	\$1,326	\$1,594	\$1,605	

**Guinea**

1			44.87									40.3						39.35				
2			34%									32%						30%				
3			30%									21%						15%				
4			64%									56%						43%				
5	3.27%	5.04%	3.97%	4.61%	4.46%	5.18%	3.81%	3.64%	2.50%	3.66%	5.16%	1.25%	2.34%	3.00%	2.50%	1.76%	4.94%	0.28%	1.94%	3.91%	3.94%	
6	\$488	\$460	\$450	\$471	\$478	\$456	\$402	\$424	\$342	\$319	\$326	\$374	\$391	\$307	\$288	\$411	\$438	\$435	\$435	\$454	\$492	

**Mali**

1			50.6								40							39				33
2			41%								30%							31%				26%
3			53%								26%							19%				16%
4			86%								61%							51%				50%
5	8.33%	2.14%	0.91%	6.21%	3.22%	6.76%	6.73%	6.03%	3.20%	12.10%	4.15%	7.44%	2.19%	6.08%	8.58%	4.30%	4.98%	4.46%	5.82%	2.73%	-1.19%	
6	\$343	\$314	\$201	\$274	\$284	\$262	\$258	\$267	\$236	\$249	\$307	\$389	\$421	\$444	\$497	\$561	\$665	\$661	\$674	\$739	\$694	

**Niger**

1	36.1		41.53											43.89				34.55				
2	29%		33%											36%				29%				
3	30%		39%											28%				12%				
4	73%		78%											66%				44%				
5	6.52%	1.45%	4.00%	2.61%	3.42%	2.75%	0.57%	10.42%	1.41%	7.10%	3.00%	5.30%	0.10%	4.50%	5.80%	3.15%	9.59%	0.71%	8.37%	2.31%	10.83%	
6	\$284	\$188	\$177	\$205	\$209	\$187	\$190	\$203	\$164	\$171	\$184	\$223	\$240	\$258	\$267	\$302	\$367	\$353	\$360	\$388	\$395	

**Nigeria**

1	44.95				46.5									42.93							48.83	
2	32%				37%									32%							38%	
3	31%				32%									29%							34%	
4	62%				69%									63%							68%	
5	0.43%	2.09%	0.91%	0.31%	4.99%	2.80%	0.47%	2.72%	5.32%	4.41%	3.78%	10.35%	33.74%	3.44%	8.21%	6.83%	6.27%	6.93%	7.84%	6.79%	6.53%	
6	\$291	\$153	\$171	\$263	\$315	\$314	\$299	\$274	\$378	\$350	\$457	\$510	\$646	\$804	\$1,015	\$1,131	\$1,376	\$1,091	\$1,437	\$1,496	\$1,555	

**Senegal**

1			41.44								41.25							39.19				40.3
2			34%								34%							30%				31%
3			19%								14%							11%				9%
4			54%								44%							34%				30%
5	1.24%	1.30%	0.02%	5.36%	2.01%	3.12%	6.35%	5.90%	3.20%	4.58%	0.65%	6.68%	5.87%	5.62%	2.46%	4.94%	3.68%	2.42%	4.27%	2.07%	3.45%	
6	\$751	\$690	\$457	\$560	\$567	\$510	\$535	\$536	\$475	\$482	\$513	\$643	\$732	\$773	\$808	\$948	\$1,094	\$1,018	\$999	\$1,083	\$1,023	

\*Data sources: World Bank Development Indicators, Poverty and Inequality Database.

Variable 1: GINI index

Variable 2: Income Share held by top 10%

Variable 3: Poverty gap at \$1.25 a day (PPP) (%)

Variable 4: Poverty headcount ratio at \$1.25 a day (PPP) (% of population)

Variable 5: GDP growth (annual %)

Variable 6: (GDP per capita (current US\$))