

The Atlantis Greentech SEZ: Lessons and experiments from SMME's within our zone1 civil works and beyond

Presented by: Hardley Smith

Our context

Just Energy Transition

Industrial Development

Inclusive development

Green economy

Transformational partnerships

Energy security

Green economic growth

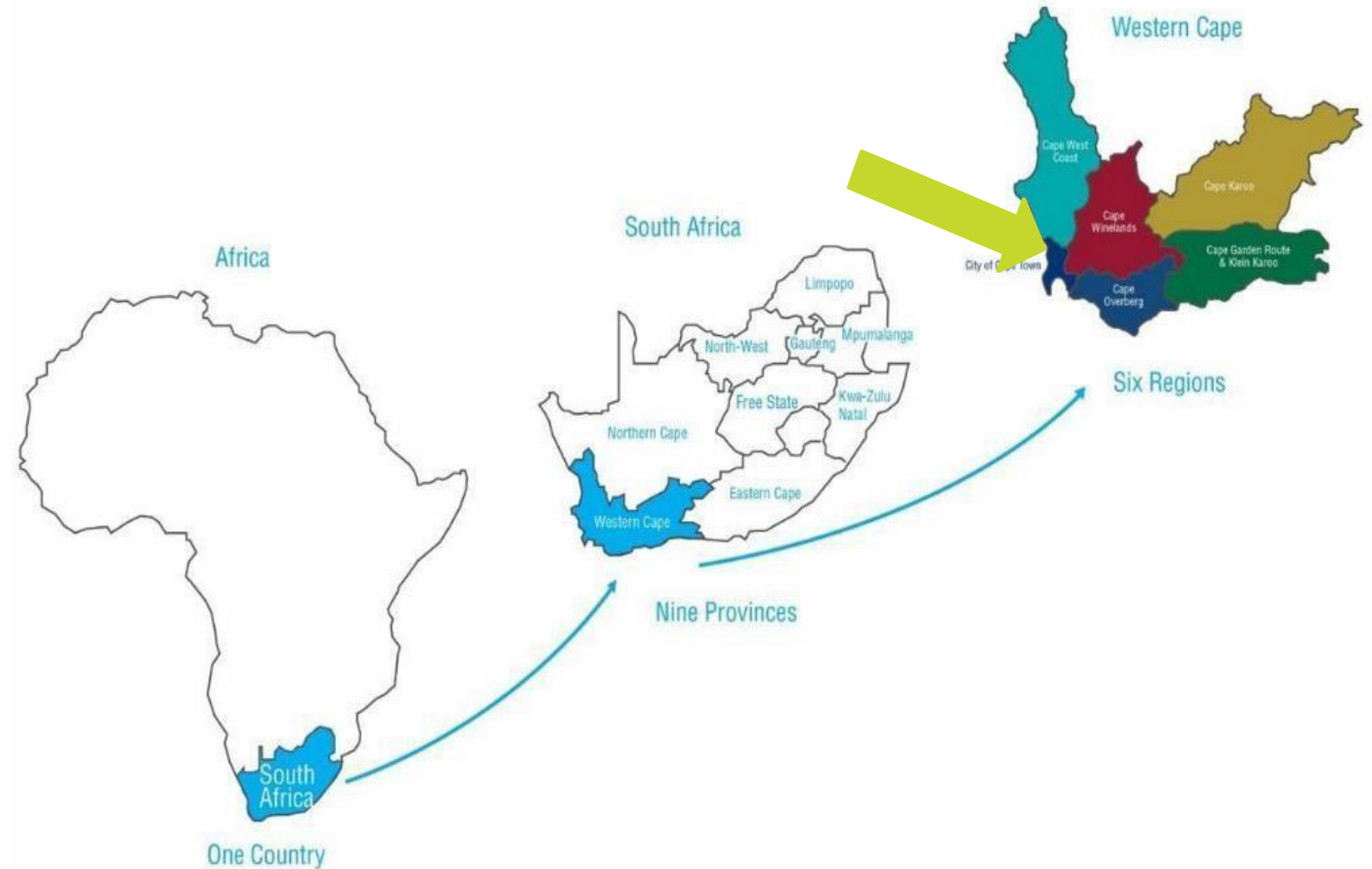
Sustained transformation

Systemic Impact

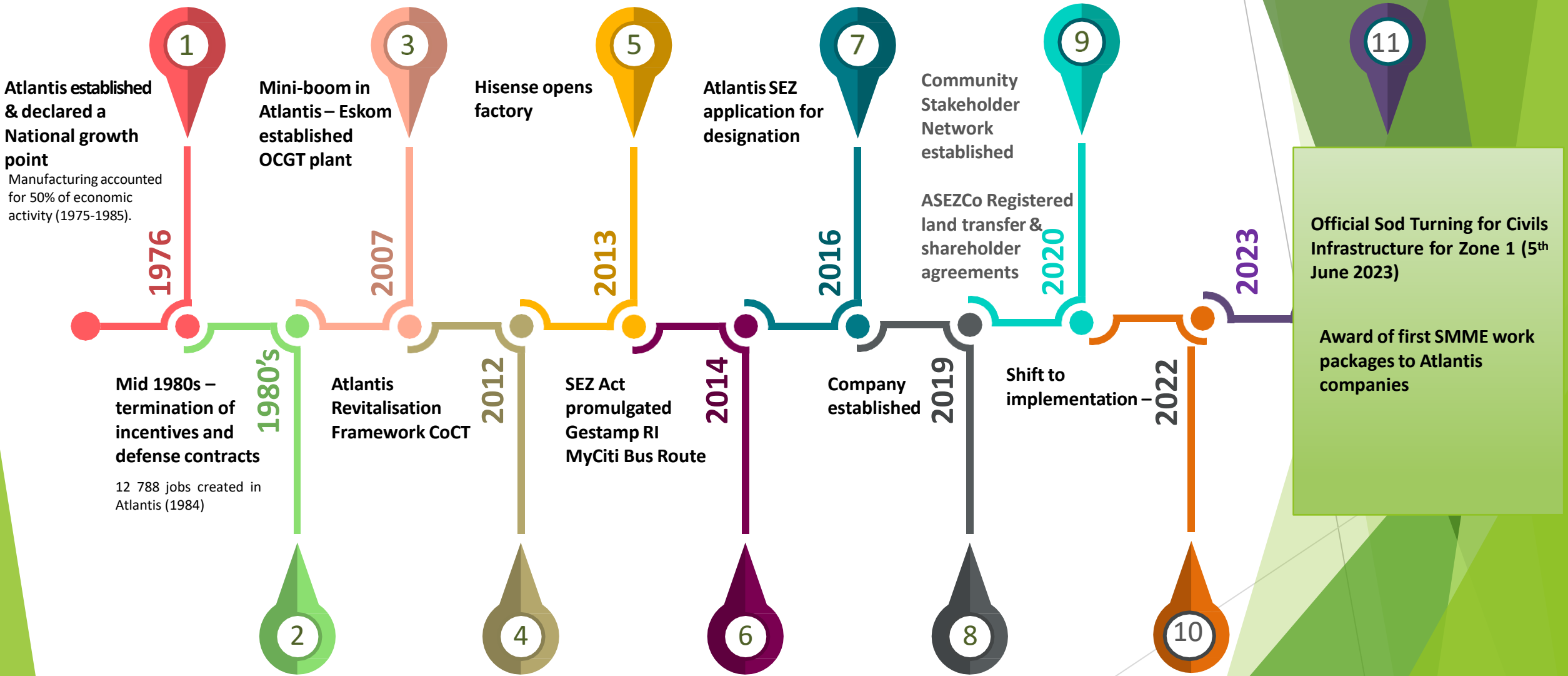
LOCATION

The Atlantis SEZ, located near Cape Town, within the Industrial area. 43km from Port of Cape Town, 108km south of the port of Saldanha Bay.

In Industrial Development along the West Coast Corridor



The timeline for Atlantis



Atlantis Greentech SEZ - Living lab: Five focus



Social Inclusion

Skills development,
enterprise
development and
community
inclusion
– just transition



Net zero waste to landfill

e.g. Industrial symbiosis
e.g. Material recovery facility



Net zero carbon



Net zero water



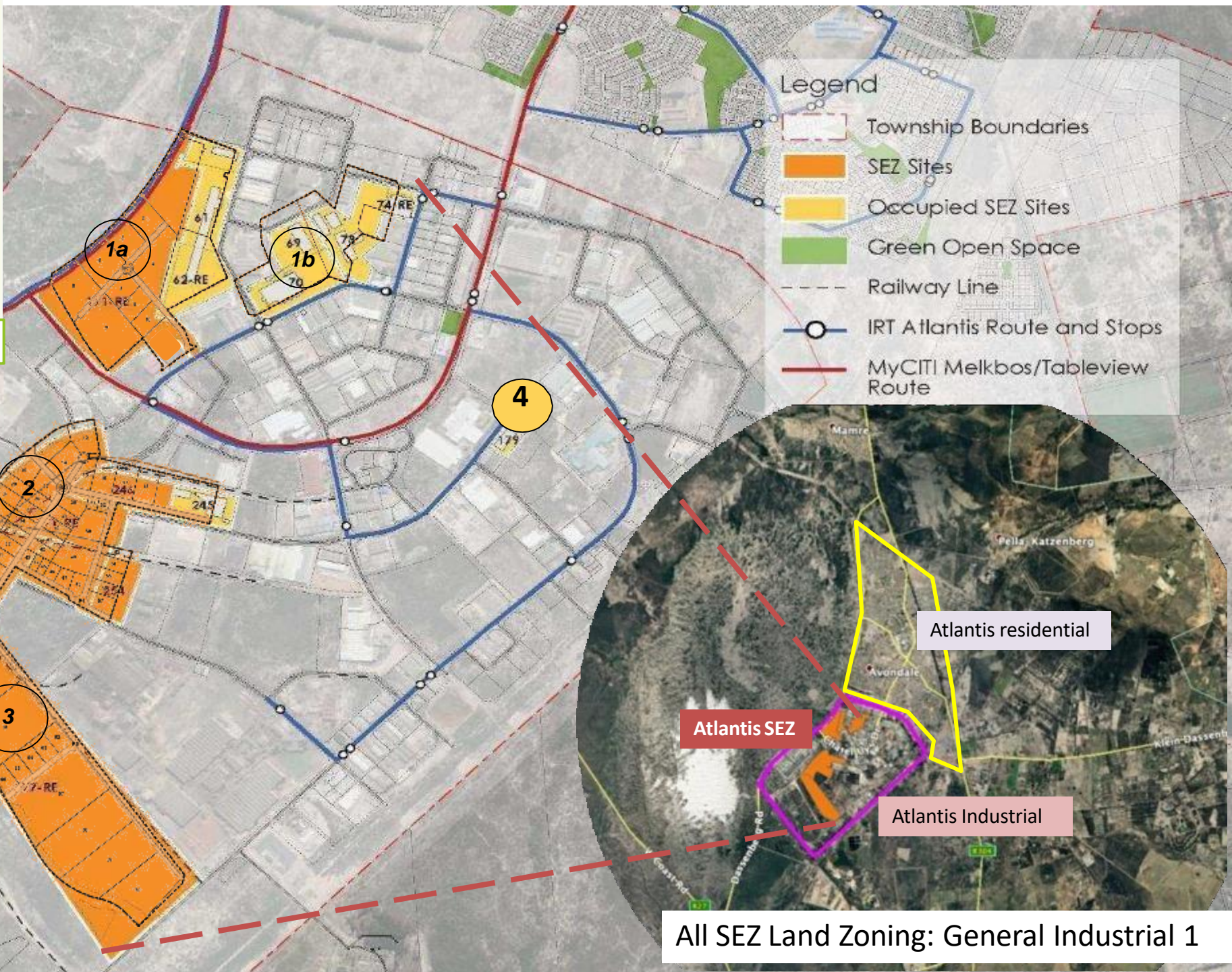
Working with nature

where green tech grows





Atlantis SEZ - Location and layout



Legend

- Township Boundaries
- SEZ Sites
- Occupied SEZ Sites
- Green Open Space
- Railway Line
- IRT Atlantis Route and Stops
- - - MyCITI Melkbos/Tableview Route

All SEZ Land Zoning: General Industrial 1

Clustering



LEGEND

Zone 1: Renewable Energy Focused Clustering

- Solar power
- Inverters
- Wind turbines
- Battery

Zone 2: Agricultural Focused Clustering

- Black soldier fly farming
- Controlled Environment Agriculture
- Agri processing

Zone 3: Agri / Adaptable

- Large industry power production
- Versatile industrial space

Alignment

The Atlantis Special Economic Zone (ASEZ) presents an ideal flagship location for piloting the South African Renewable Energy Masterplan (SAREM) and implementation the Just Energy Transition Investment Plan (JET-IP).

- Strategically position
- policy support,
- infrastructure
- skilled workforce
- Social Inclusivity

INFRASTRUCTURE DEVELOPMENT



ZONE 1 – construction of Civil Infrastructure in progress:

- Percentage Complete of Overall Project – 70%
- Planned completion – October 2024
- 19 SMME Packages



SMME's Challenges on Civil Works

**Compliance
Challenges**

**Resource
Constraints**

**Inadequate
training and
skills
development**

**Inadequate
engagement
and support
from
contractors**

**No tailored
solutions**

**Communication
and
interpersonal
skills**

Lessons Learned

Compliance

**Simplify Procedures
and provide clear
guidelines for SMME's**

**Limited
Resources**

**Develop skills
in resource optimisation and
supportive partnerships**

**Refine
Administration
processes**

**Providing SMME's with the
required support for effec
tive administration**

Lessons Learned

**Knowledge
Sharing
Platform**

Access to peer support
and Information

**Cost and
Quality**

SMME's investigate cost-
effective options that did
not sacrifice standards

**Pre -
Contractual
Training**

Equipping SMME with the
industry requirements
related to costing and
contracting

Lessons Learned

**Bridging
Finance**

Linking SMME's with
reputable institutions to
access finance

**Effective
Communication**

The critical and essential
aspect of communication
with stakeholders

**Relationship
Management**

Working towards mutually
beneficial solutions

Conclude

The insight from the experience of SMME's within Zone 1 of the ASEZ have been instrumental in driving continuous improvement across the project.

The lessons learned have led to enhances coordination, logistics, and communication - key pillars that underpin the success of any initiative.



Dankie – Siyabonga - Thank You